

Alfred Jäger GmbH

SF-Elektromaschinenbau



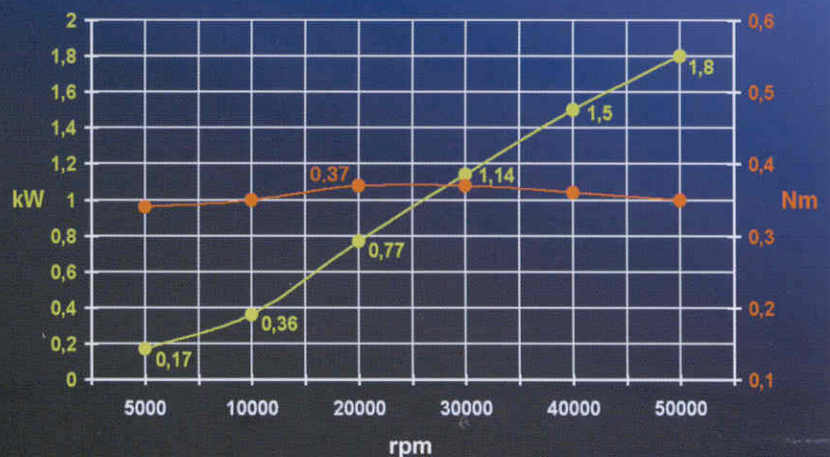
SK4-06/50

High frequency spindle
in 30° - position
to integrate into the
full-automatical
process of machine tools.
Applicable for drilling,
milling and grinding.



Technical data:

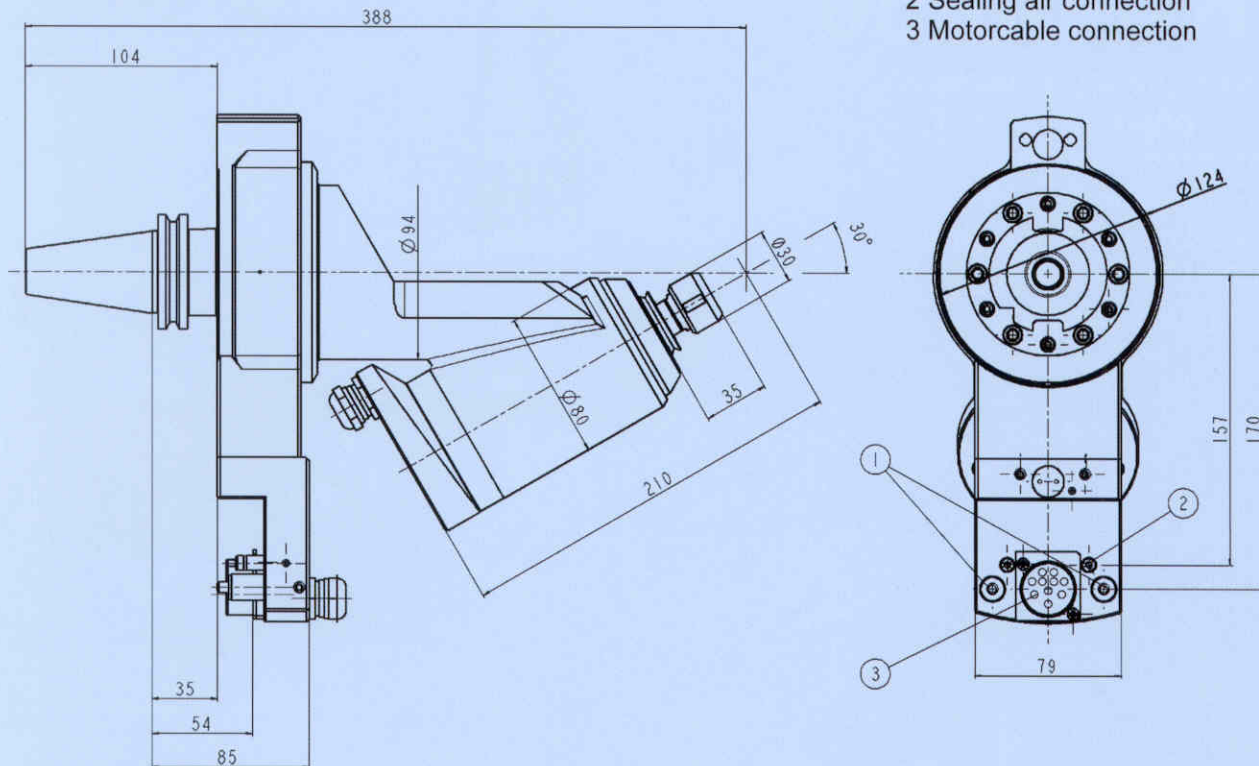
- Power output: 1,8 KW
- Rotation frequency speed: 5.000 - 50.000 rpm
- Ceramic hybrid precision ball bearings lubricated for life
- Manual clamping
- Clamping range: 1 - 10 mm
- Sealing air
- Rotation speed monitoring
- Temperature monitoring
- Liquid cooled
- Expounder for an automatical connecting system of the supply lines
- Weight: 9,5 kg





SK4-06/50

- 1 Cooling hose connections
- 2 Sealing air connection
- 3 Motorcable connection



Accessories:

- Taper adapter SK 40 / SK 50 with or without grab groove (various taper adapter on request)
- Collet type 10 D (1 - 10 mm)
- Operating line 10 m Automatical change system for the supply lines
 - elevating gear
 - electromagnetic nearing system
- System cabinet 49/2A/KKG 1.2 for spindle and automatical connecting system
 - Solid-state frequency converter 49/2A
 - Cooling unit KKG 1.2
 - Valve set
 - Option: with wheels
- System cabinet 49/2D/KKG 1.2 for spindle and automatical connecting system
 - Solid-state frequency converter 49/2D
 - Cooling unit KKG 1.2
 - Valve set
 - Option: with wheels
- Cable remote control (only for digital frequency converter 49/2D)

Update: 01/01