

33-1.26 W02-10

High-frequency spindle
pneumatic direct tool change

**Spindle for high-speed -drilling, -routing,
-depaneling**

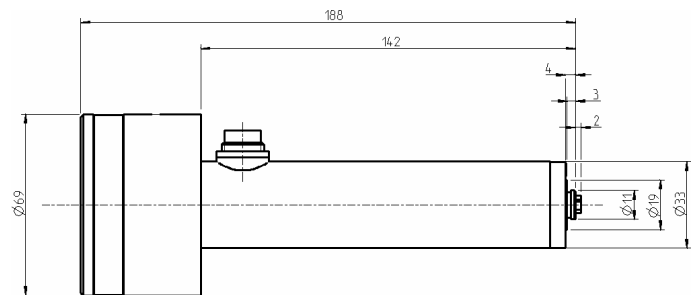
Technical specifications

- High precision hybrid ball bearings – 2Pcs.
- Lifetime lubricated, maintenance free
- Output power: Pmax. 400 W
- Output power: S1-100% ED 300 W
- Output power: S6-60% ED 360 W
- Voltage: S1-100% ED 56 V
- Voltage: S6-60% ED 59 V
- Current: S1-100% ED 5,3 A
- Current: S6-60% ED 6,0 A
- Frequency: max. 1666,6 Hz
- Motor poles: 1 pair
- Rotation speed: max. 100.000 rpm
- Housing diameter: 33 mm
- Cooling system: non cooled
- Tool change: pneumatic direct tool change
- Clamping range: up to 3mm (1/8")
- Coupler plug: 3-pole metal
- Weight: 1 Kg
- Inner taper run out < 1 μ

Example of design



Dimensions



Power-, torque- and speed diagram

