

42-2.5 W34 FS

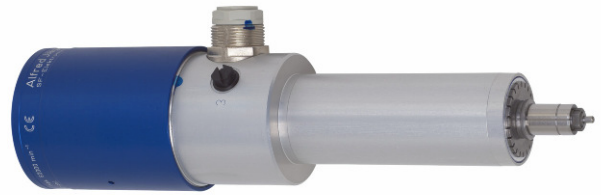
High-frequency spindle
Pneumatic direct tool change

**Spindle for high-speed -drilling, -routing,
-depaneling**

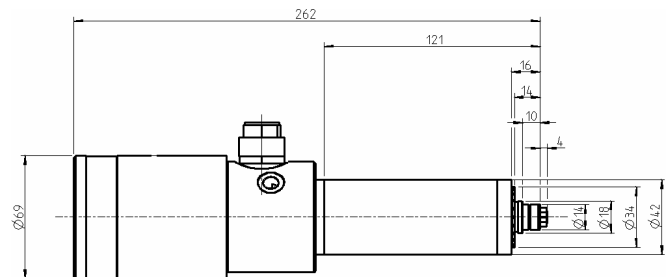
Technical specifications

- High precision hybrid ball bearings – 2 Pcs.
- Lifetime lubricated, maintenance free
- Output power: Pmax. 970 W
- Output power: S1-100% ED 460 W
- Output power: S6-60% ED 630 W
- Voltage: S1-100% ED 90 V
- Voltage: S6-60% ED 100 V
- Current: S1-100% ED 5 A
- Current: S6-60% ED 6,5 A
- Frequency: max. 1000Hz
- Motor poles: 1 pair
- Rotation speed: max. 60.000 rpm
- Motor protection: thermistor
- Speed monitoring: transmitter
- Sealing-air
- Housing diameter: 42 mm
- Cooling system: non cooled
- Tool change: pneumatic direct tool change
- Clamping range: up to 6 mm (1/4")
- Coupler plug: 7-pole plastics
- Contact by touch (ESD Prevention)
- Weight: 2,2 kg
- Inner taper run out < 1 μ

Example of design



Dimensions



Power-, torque- and speed diagram

